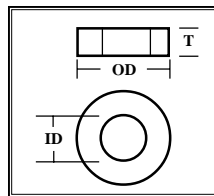


WASHERS

SCREW SIZE	NOMINAL SIZE	(T) in thousandths													
		MOLYBDENUM		TANTALUM					TUNGSTEN						
SAE	MM	O.D.	I.D.	.005	.010	.015	.020	.030	.005	.010	.015	.020	.030	.005	.010
#0	-	3/16	.067	✓	✓	✓	-	-	-	✓	✓	-	-	✓	✓
-	2	13/64	.093	✓	✓	✓	-	-	-	✓	✓	-	-	✓	✓
#2	-	1/4	.093	✓	✓	✓	-	-	-	✓	✓	-	-	✓	✓
#4	-	5/16	1.25	✓	✓	✓	✓	✓	-	✓	✓	-	-	✓	✓
-	3	9/32	.125	✓	✓	✓	✓	✓	-	✓	✓	-	-	✓	✓
#6	-	3/8	.148	✓	✓	✓	✓	✓	-	✓	✓	✓	-	✓	✓
-	4	23/64	.172	✓	✓	✓	✓	✓	-	✓	✓	✓	-	✓	✓
#8	-	7/16	.174	✓	✓	✓	✓	✓	-	✓	✓	✓	-	✓	✓
#10	-	1/2	.203	✓	✓	✓	✓	✓	-	✓	✓	✓	✓	✓	✓
#12	-	1/2	.234	✓	✓	✓	✓	✓	-	✓	✓	✓	✓	✓	✓
-	6	1/2	.250	✓	✓	✓	✓	✓	-	✓	✓	✓	✓	✓	✓
1/4	-	5/8	.265	✓	✓	✓	✓	✓	-	✓	✓	✓	✓	✓	✓
5/16	-	3/4	.300	✓	✓	✓	✓	✓	-	✓	✓	✓	✓	✓	✓
-	8	45/64	.328	✓	✓	✓	✓	✓	-	✓	✓	✓	✓	✓	✓
3/8	-	7/8	.406	✓	✓	✓	✓	✓	-	✓	✓	✓	✓	✓	✓
-	10	53/64	.406	✓	✓	✓	✓	✓	-	✓	✓	✓	✓	✓	✓
1/2	-	1 1/8	.531	✓	✓	✓	✓	✓	-	✓	✓	✓	✓	✓	✓



T = Thickness

MM = Millimeters

ID = Inner Diameter

OD = Outer Diameter

SAE = Society of Automotive Engineers

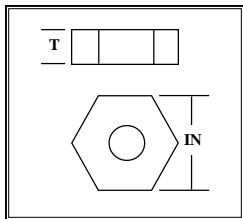
TEL: 800-638-2581

E-MAIL: sales@espi-metals.com

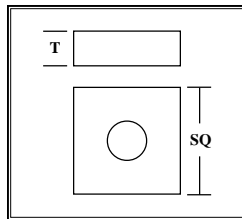
FAX: 541-488-8313

NUTS

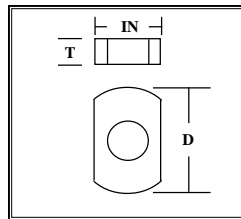
SAE SIZE	METRIC SIZE	HEX		SQUARE		ROUND			ROUND SLOTTED			
		T	IN	T	SQ	D	T	IN	D	T	A	B
0-80	-	.06	5/32	.04	5/32	3/16	.06	5/32	-	-	-	-
-	2X.4	.06	5/32	.04	5/32	3/16	.06	5/32	3/16	3/32	1/32	3/64
2-56	-	.06	3/16	.04	3/16	3/16	.06	5/32	3/16	3/32	1/32	3/64
4-40	-	.06	1/4	.06	1/4	1/4	.06	1/4	1/4	3/32	1/32	3/64
-	3X.5	.06	1/4	.06	1/4	1/4	.06	1/4	1/4	3/32	1/32	3/64
6-32	-	-	-	.09	5/16	3/8	.09	5/16	5/16	3/32	1/32	3/64
-	4X.7	-	-	.09	5/16	3/8	.09	5/16	5/16	1/8	1/16	1/16
8-32	-	-	-	.10	11/32	3/8	.09	11/32	3/8	1/8	1/16	1/16
10-32	-	1/8	3/8	1/8	3/8	7/16	1/8	3/8	7/16	9/16	1/16	3/32
-	5X.8	1/8	3/8	1/8	3/8	7/16	1/8	3/8	7/16	9/16	3/32	3/32
12-28	-	3/16	7/16	3/16	7/16	1/2	3/16	7/16	7/16	13/64	3/32	3/32
-	6X1.0	-	-	3/16	7/16	1/2	3/16	7/16	7/16	13/64	3/32	3/32
1/4-20	-	7/32	7/16	1/8	7/16	1/2	7/32	7/16	-	-	-	-
1/4-28	-	7/32	35/64	-	-	1/2	7/32	7/16	-	-	-	-
5/16-18	-	17/64	35/64	3/16	9/16	5/8	3/16	35/64	-	-	-	-
5/16-24	-	17/64	5/8	3/16	9/16	5/8	3/16	35/64	-	-	-	-
3/8-16	-	21/64	5/8	1/4	5/8	3/4	1/4	5/8	-	-	-	-
3/8-24	-	21/64	-	1/4	5/8	3/4	1/4	5/8	-	-	-	-
1/2-13	-	-	-	3/8	3/4	1.0	3/8	3/4	-	-	-	-
1/2-20	-	-	-	3/8	3/4	1.0	3/8	3/4	-	-	-	-



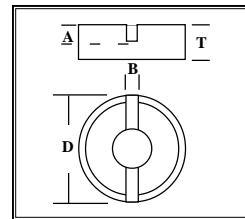
Hex



Square



Round



Round Slotted

Nuts are available in Molybdenum, Tantalum and Tungsten.

B = Width

IN = Inches

D = Diameter

T = Thickness

A = Slot Depth

SQ = Distance in Inches

TEL: 800-638-2581

E-MAIL: sales@espi-metals.com

FAX: 541-488-8313

THREADED ROD

STD	METRIC	WIRE WOUND	MAJOR DIA (BASIC)	TUNGSTEN	MOLYBDENUM	TANTALUM	STOCKED LENGTH
0-80	-	-	0.060	-	✓	✓	12"
-	-	1/16	0.062	✓	✓	✓	12"
-	2X.4	-	0.079	-	✓	✓	12"
2-56	-	-	0.086	-	✓	✓	12"
4-40	-	-	0.112	-	✓	✓	24"
-	3X.5	-	0.118	-	✓	✓	24"
-	-	1/8	0.125	✓	✓	✓	12"
6-32	-	-	0.138	-	✓	✓	24"
-	4X.7	-	0.157	-	✓	✓	24"
8-32	-	-	0.164	-	✓	✓	24"
-	-	3/16	0.187	✓	-	-	12"
10-32	-	-	0.190	-	✓	✓	24"
-	5X.8	-	0.197	-	✓	✓	24"
12-28	-	-	0.216	-	-	✓	24"
-	6X1.0	-	0.236	-	✓	✓	24"
-	-	1/4	0.250	✓	-	-	12"
1/4-20	-	1/4-20	0.250	✓	✓	✓	12"
1/4-28	-	-	0.250	-	✓	✓	24"
5/16-18	-	-	0.312	-	✓	-	24"
5/16-24	-	-	0.312	-	-	✓	24"
-	8X1.25	-	0.315	-	✓	✓	24"
3/8-16	-	-	0.375	-	✓	-	24"
3/8-24	-	-	0.375	-	✓	✓	24"
-	-	3/8	0.375	✓	-	-	24"
-	10-1.5	-	0.394	-	-	-	12"
1/2-13	-	-	0.500	-	✓	-	24"
1/2-20	-	-	0.500	-	✓	✓	24"
5/8-11	-	-	0.625	-	✓	-	24"

Special pricing for large quantities.

TEL: 800-638-2581 E-MAIL: sales@espi-metals.com FAX: 541-488-8313